

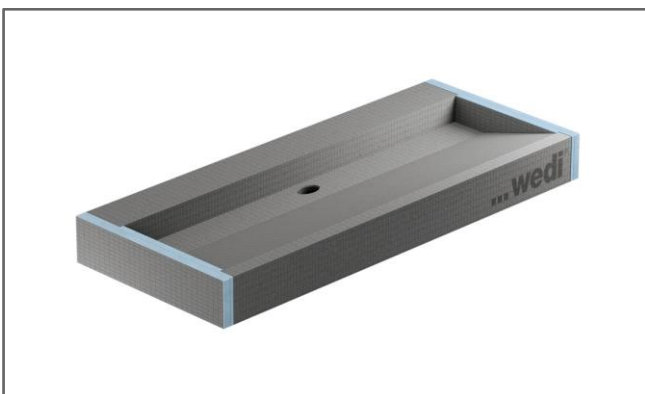
Design meets flexibility: the new Sanbath washbasins from wedi



Images for download



With the new Sanbath range, wedi is positioning itself in the segment of prefabricated, tileable washbasins. wedi Sanbath Flex and Sanbath Modular combine design and flexibility with a high level of prefabrication and straightforward installation, while maintaining strong focus on cost efficiency.



The wedi Sanbath Flex washbasin is part of the standard range and therefore available from stock. It allows flexible adjustment to the required length. Continuous installations can be created without visible joints. With a load capacity of up to 150 kilograms, the washbasin is both robust and durable. In addition, the washbasin can be fully tiled and adapted to any material or colour concept.

Design meets flexibility: the new Sanbath washbasins from wedi



Images for download



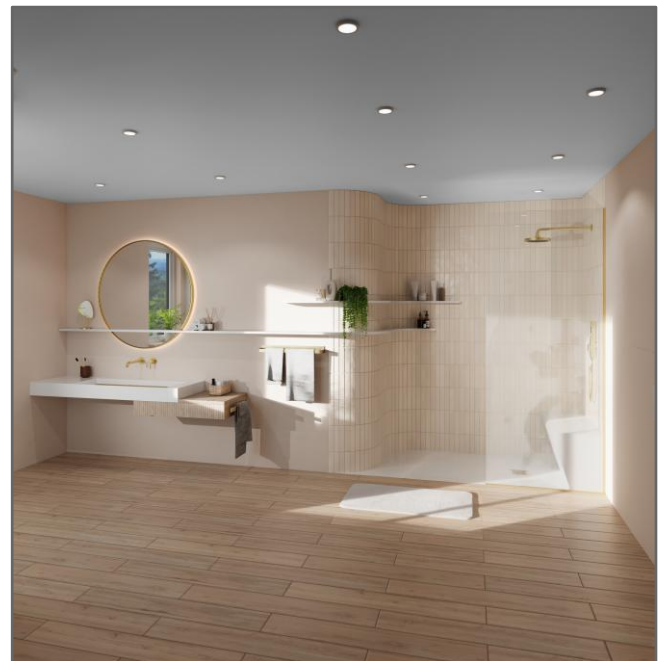
For projects with clearly defined design requirements, the Sanbath Modular washbasin is available in six configurations. Users can select the washbasin size and choose between versions with or without side ledges. The tap mounting is factory-integrated, and the washbasins are supplied ready for installation..



Design meets flexibility: the new Sanbath washbasins from wedi



Images for download



Both washbasin variants are fully integrated into the wedi system and are 100% waterproof. In combination with wedi Fundo drain covers and additional system components, washbasin and shower areas can be visually coordinated. The result is a consistent overall bathroom design, combined with secure, tested system components from a single source.