

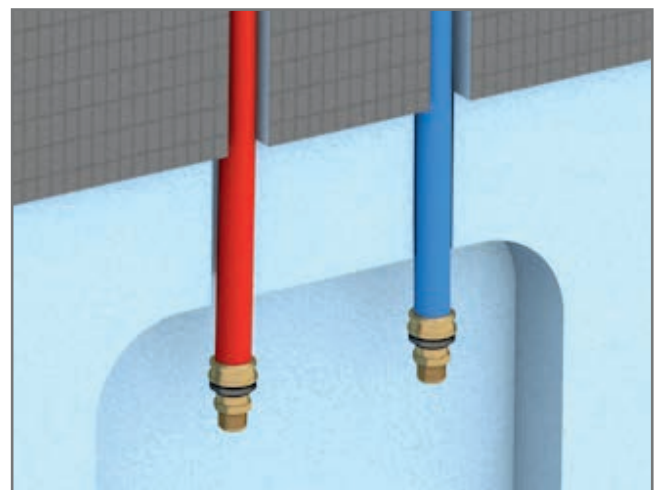
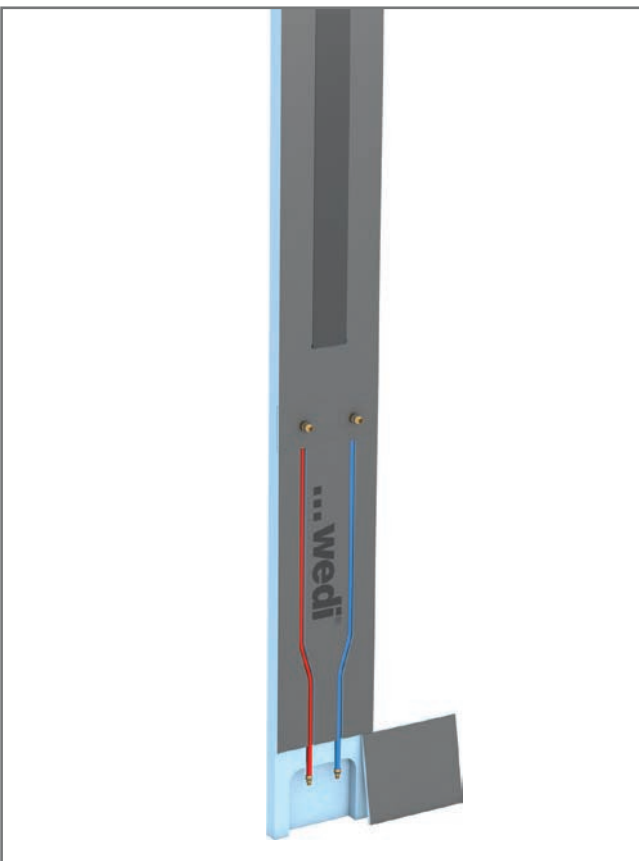
## wedi Sanwell XS shower wall module: reliable performance in the most limited spaces



Fotos zum Download



Small bathrooms call for big ideas – especially when the shower needs to be comfortable, safe, and stylish despite limited space. For exactly this purpose, wedi has developed a new shower wall module: the wedi Sanwell XS shower wall module combines minimal installation dimensions with integrated technology.



The wedi Sanwell XS shower wall module is only 300 mm wide and 50 mm thick, yet it already contains all components required for a shower with surface-mounted fittings. These include factory-integrated cold and hot water pipes and a reinforcement plate for securely fixing the shower rail. Delivered 100% waterproof, the module ensures reliable performance from the start.

## wedi Sanwell XS shower wall module: reliable performance in the most limited spaces



Fotos zum Download



This innovative wall element combines several trades and work steps in one product. Separate piping is no longer necessary, eliminating the complexity of traditional installation walls. As a result, installation is particularly fast, with minimal noise and dirt. The new module integrates seamlessly into the existing wedi system portfolio and can be used as a back wall installation or as part of longer partition walls.