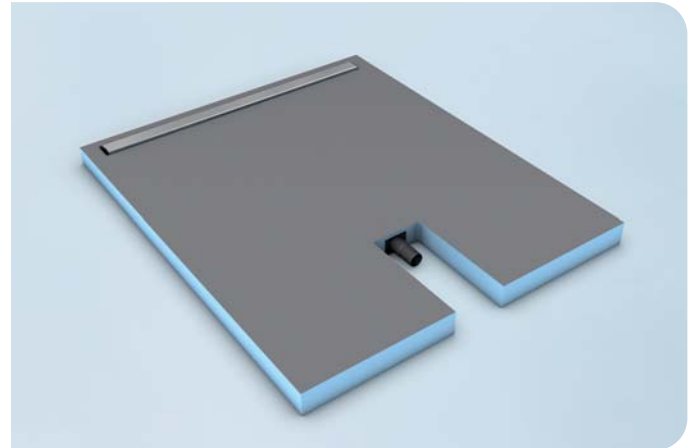


Technical data sheet

Fundo Plano® Linea

- Extremely flat, only 70 mm total installation height
- Drainage especially close to the wall
- Complete system with integrated drain technology
- Total system is 100 % watertight



General Product Description

Flush-to-floor shower element with linear drainage for direct tiling with integrated, flat horizontal drain technology. Ideally suited for new builds, renovations and particularly for refurbishment of old buildings.

Areas of Application

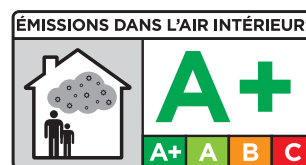
- In private housing
- As construction waterproofing in combination with tiling and slab floor coverings of wear class A0 and A (floor surfaces moderately stressed by non-pressing water indoors; directly stressed floor surfaces in rooms in which service and cleaning water is used very frequently or for long sustained periods), for further information see www.wedi.eu

Product Characteristics

With its total installation height of only 70 mm, the Fundo Plano Linea is the flattest complete flush-to-floor wedi shower system with linear drainage. There is a choice of long or short channel positioned extremely close to the wall.

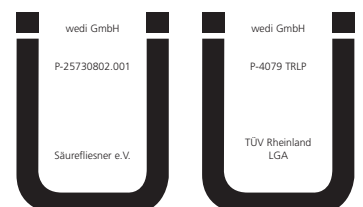
Floor and Fabrication Requirements

Information on installation and surface requirements can be found in the fitting instructions. These are enclosed with the element and are available online at www.wedi.eu



* Information sur le niveau d'émission de substances volatiles dans l'air intérieur, présentant un risque de toxicité par inhalation, sur une échelle de classe allant A+ (très faibles émissions) à C (fortes émissions).

Information on the emission level of volatile substances in indoor air which present a risk of inhalation toxicity, on a scale of A+ (very low emissions) to C (high emissions).



Technical Characteristics of the Untreated Foam

Extruded polystyrene rigid foam	XPS
Long-term compressive stress (50 years) \leq 2% compression EN 1606	0,08 N/mm ²
Compressive strength / stress at 10% compression EN 826	0,25 N/mm ²
Heat conductivity EN 13164	0,036 W/mK
Bulk density EN1602	32 kg/m ³
Temperature limits	-50°C / +75°C
Fire behaviour EN 13501	E
Blowing agent carbon dioxide GWP rating	1

Technical Characteristics of Fundo Plano Linea

Can take strain of wheelchair use from a minimum tile size of	50 x 50 mm
Glass mosaic from minimum size	20 x 20 mm
Total installation height incl. built-in drain technology	70 mm
Surface slope	\geq 1,19%
Adjustment range for stainless steel covers	5–25 mm
Dimensions of stainless steel covers (depends on drain length L x W)	
Drain cover, 300 mm	288 x 44 mm
Drain cover, 700 mm	688 x 44 mm
Drain cover, 800 mm	788 x 44 mm
Drain cover, 900 mm	888 x 44 mm
Drain performance	0,40 l/s ; 24,0 l/min

A height-adjustable cover in brushed stainless steel V₂A and a large sealing sheet (1.000 x 450 mm) are included in the scope of delivery with all Fundo Plano Linea floor elements. The horizontal drain DN 40 is permanently integrated into the floor element.

Delivery Form

1 box

Storage

The Fundo Plano Linea system should always be stored lying flat and be protected against direct sunlight and moisture.

Information about the fabrication and application possibilities of wedi products, technical recommendations or advice or other statements of our employees (advice on applications and technology) are given to the best of our knowledge, but are non-binding and free from liability of any kind. They do not relieve our customers and their customers from making their own tests and experiments on the suitability of the products for the intended processes and purposes.